

SIEMENS

Siveillance VMS to SiPass Video Integration

Interface version 1.1

Installation/ Configuration Guide

Table of Contents

1	About this Document.....	3
1.1	Before you start	3
1.1.1	Copyright.....	3
2	Introduction	3
2.1	Installation Components.....	3
3	Installation	4
3.1	Installation Wizard	4
3.1.1	Choose the language.....	4
3.1.2	Choose Integration Software	5
3.1.3	Camera Cache Setup.....	5
3.1.4	SiPass Installation Configuration	6
3.1.5	Interface Installation Directory.....	7
3.1.6	Finish Installation Wizard	7
3.2	Change Camera Cache Port.....	8
4	Configuration.....	9
4.1	Configure VMS	9
4.2	AutoDiscover Cameras from Siveillance VMS.....	11
4.3	Play Live Video.....	12
4.4	Play Recorded Video	14
4.4.1	Play by time	14
4.4.2	Search video clips.....	15
4.4.3	Controls	15
4.4.4	Information about recorded video	16
4.5	Virtual Monitors	17
4.6	Motion Detection.....	18

1 About this Document

1.1 Before you start

1.1.1 Copyright

This document may be duplicated and distributed only with the expressed permission of Siemens Switzerland Ltd, and may be passed only to authorized persons or companies.

2 Introduction

This document is a guide for the installation and configuration of the Siveillance VMS to SiPass Video integration. It supports SiPass integrated MP 2.70 SP1 and Siveillance VMS 2017 R2. This document will not cover installation and configuration of SiPass Integrated and Milestone/Siveillance VMS.

2.1 Installation Components

Note: The **Generic DVR API license** is required for this SiVMS integration feature to be enabled.

Presently, the SiVMS integration code supports the following DVR-API capabilities:

- Auto-discover cameras
- Auto-discover IP cameras (remote video inputs)
- Query list of video clips
- Play Live
- Playback (clip-based and time-based)
- Next/previous frame during playback
- Set playback speed
- Telemetry actions (movement and zoom in/out)
- Motion detected/normal events

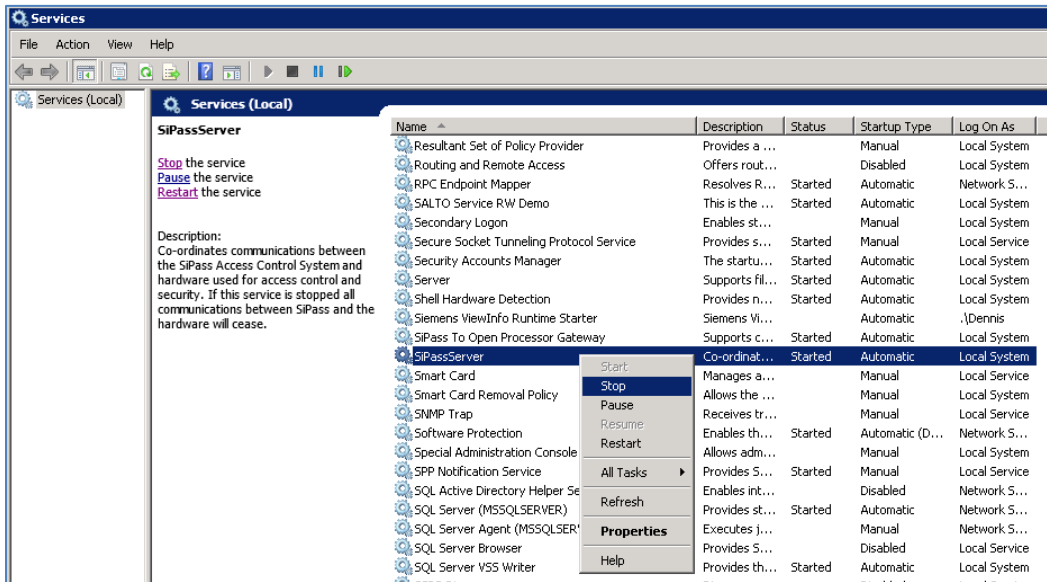
Not supported: Starting/stopping of recording

The installation wizard of the interface installs the following components:

Interface Program	The program which will connect to Milestone/ Siveillance VMS and integrate the DVR functionalities into SiPass integrated.
Camera Cache Service	This service should only be installed once. It is recommended to install the service on the same machine the SiPass Server is installed on. The service maps the unique camera number within SiPass to a Milestone specific unique identifier. The service is installed only once and each client is connecting to it.

3 Installation

If the Camera Cache Service will be installed too make sure SiPassServer Service is stopped.



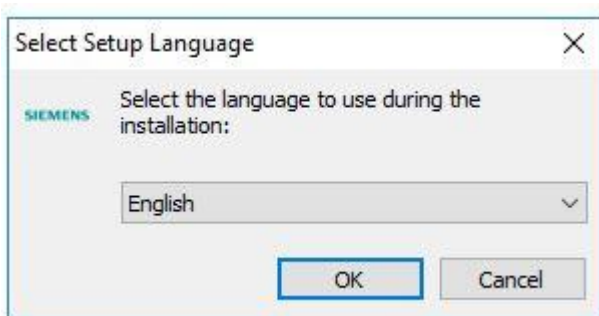
3.1 Installation Wizard

To enable DVR live video on SiPass Client workstation, the **Siveillance VMS Connector** must be installed on the server and the remote client computer.

Copy the *SiPass Siveillance VMS connector.exe* file to a folder on the client or server computer and double click it. A wizard guides you through the installation.

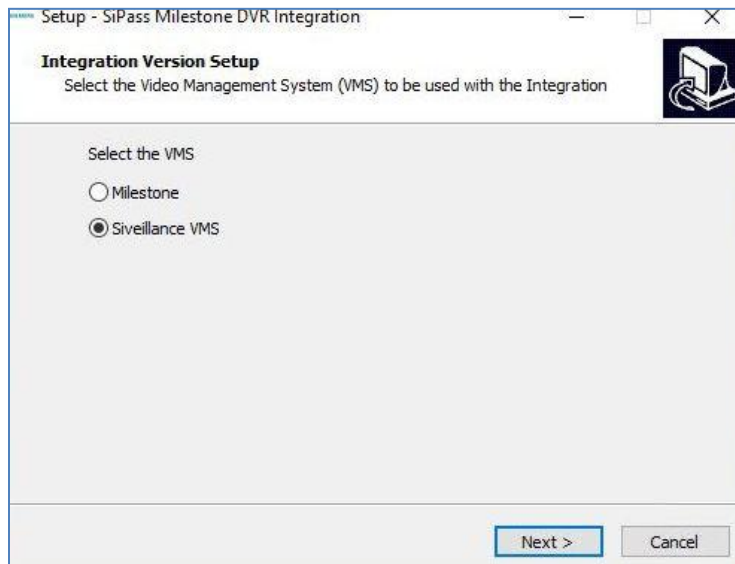
3.1.1 Choose the language

Choose in which language the installer shall be installed and click **OK**. Click **Next** on the introduction site.



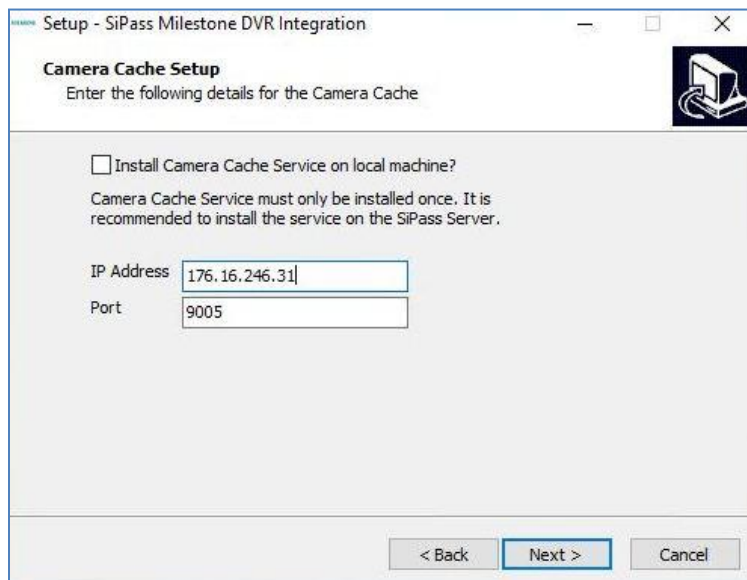
3.1.2 Choose Integration Software

Select the VMS system which is used in this installation.

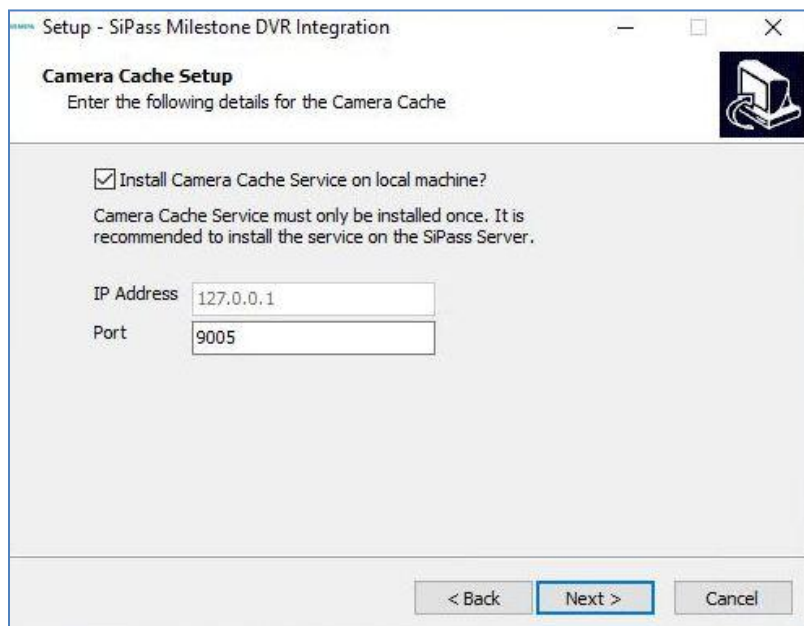


3.1.3 Camera Cache Setup

Option 1: Camera Cache is installed on a remote machine. Port 9005 is the default configuration (see section 3.2 Change Camera Cache Port) on how to change the port.



Option 2: Camera Cache shall be installed on the same local machine as the Camera Cache Service is installed.



Setup - SiPass Milestone DVR Integration

Camera Cache Setup
Enter the following details for the Camera Cache

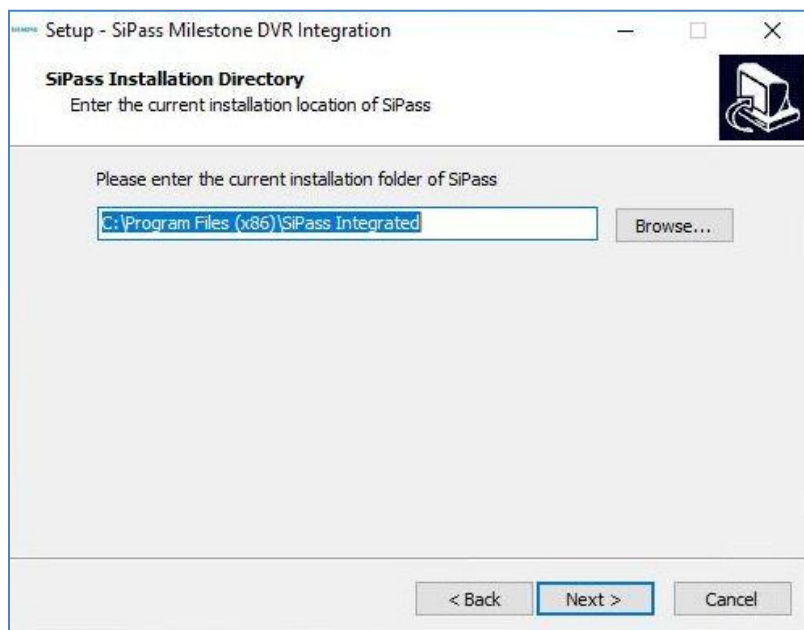
☒ Install Camera Cache Service on local machine?
Camera Cache Service must only be installed once. It is recommended to install the service on the SiPass Server.

IP Address: 127.0.0.1
Port: 9005

< Back Next > Cancel

3.1.4 SiPass Installation Configuration

Link the current SiPass Installation folder.



Setup - SiPass Milestone DVR Integration

SiPass Installation Directory
Enter the current installation location of SiPass

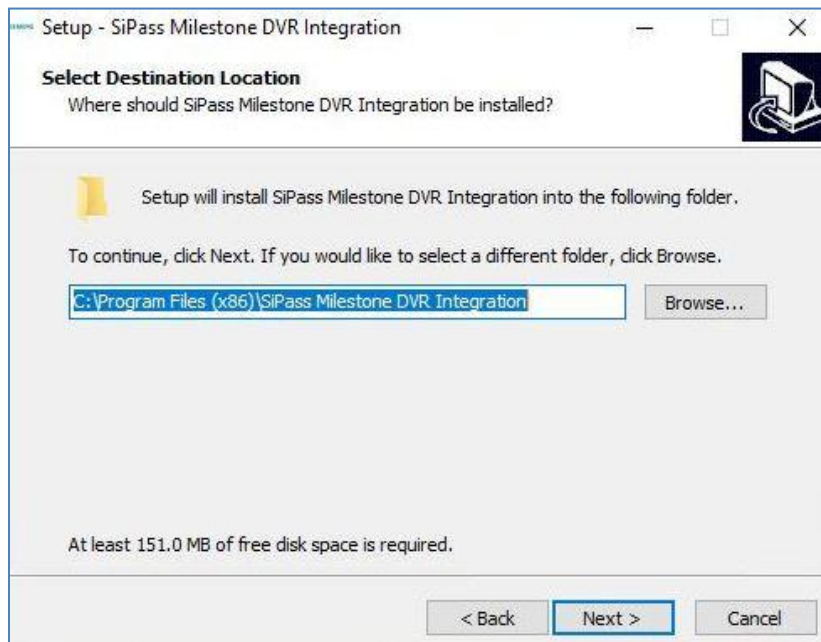
Please enter the current installation folder of SiPass

C:\Program Files (x86)\SiPass Integrated Browse...

< Back Next > Cancel

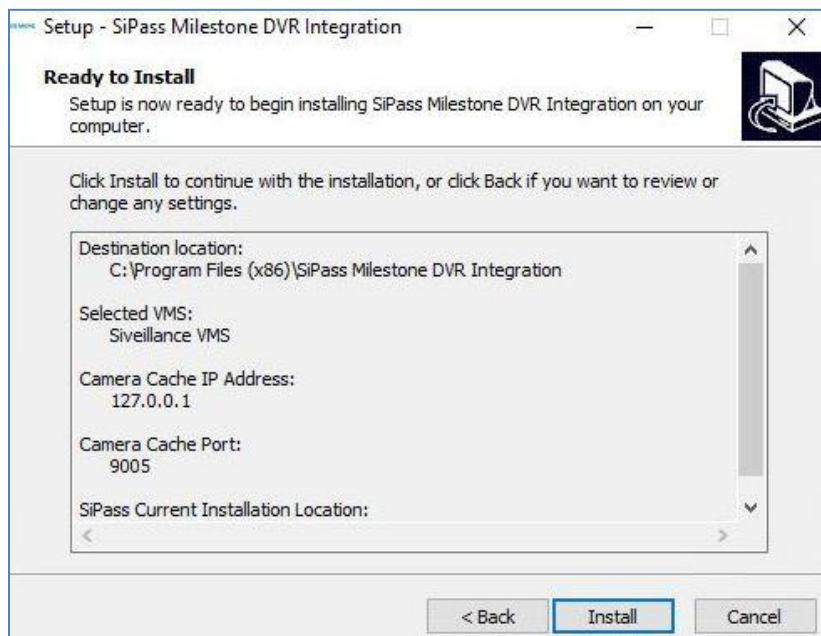
3.1.5 Interface Installation Directory

Define interface installation directory.

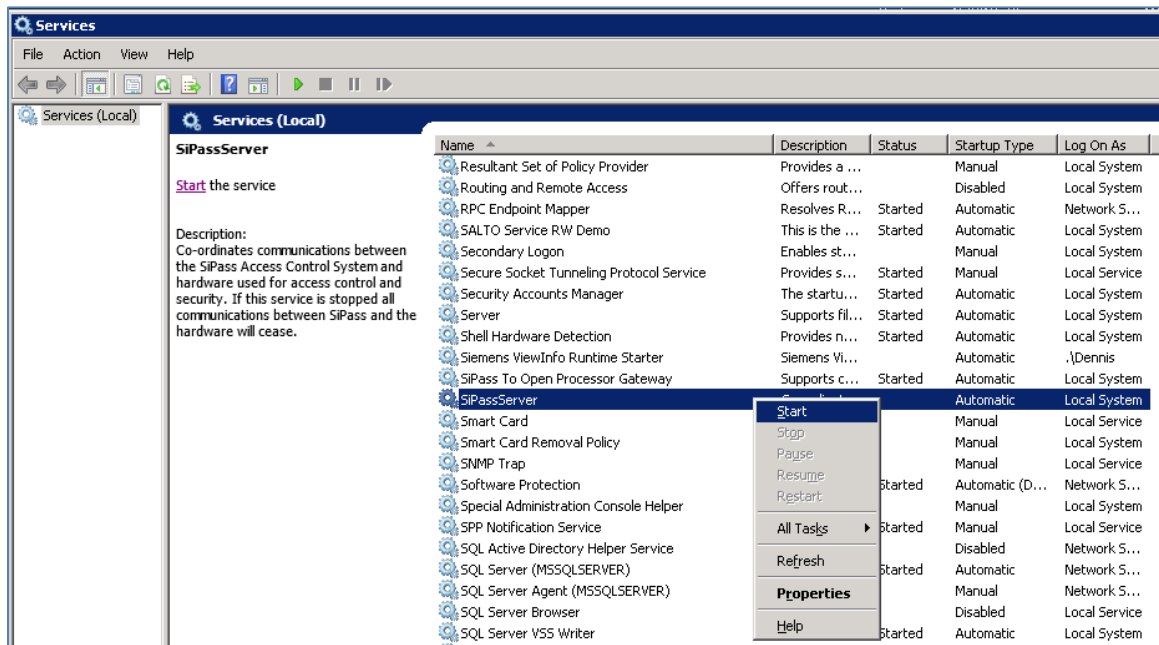


3.1.6 Finish Installation Wizard

Check if your inputs are correct. **Install** button will install the interface and optional the camera cache service.

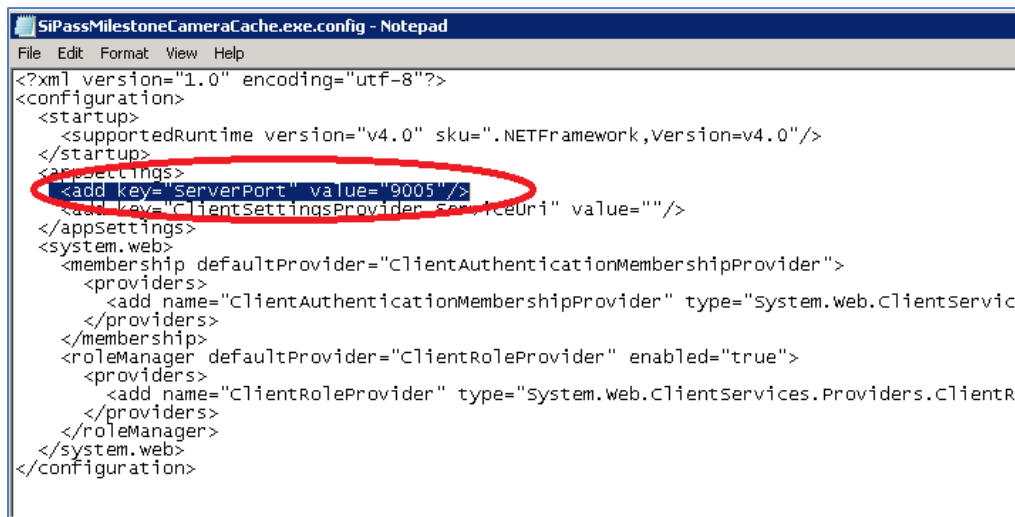


In case the Camera Cache Service was installed too, make sure to start the SiPassServer service.

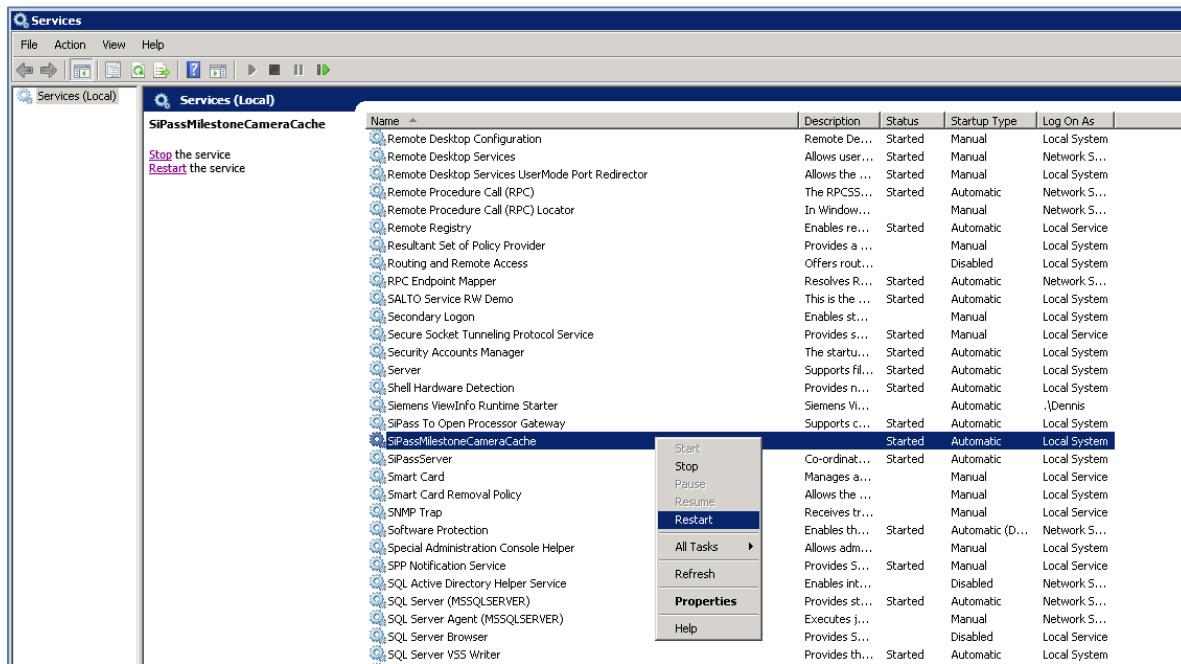


3.2 Change Camera Cache Port

A port of a service is comparable to the house number of a building. It is needed so the two involved software components can find and talk with each other. Default setting is the port 9005 for the Camera Cache Service. To change the port go to “C:\Program Files (x86)\SiPass Milestone DVR Integration\CameraCache” on the PC where the Camera Cache Service is installed, and open SiPassMilestoneCameraCache.exe.config. Change the value of key “ServerPort”:



After changing the Port, the service has to be restarted:

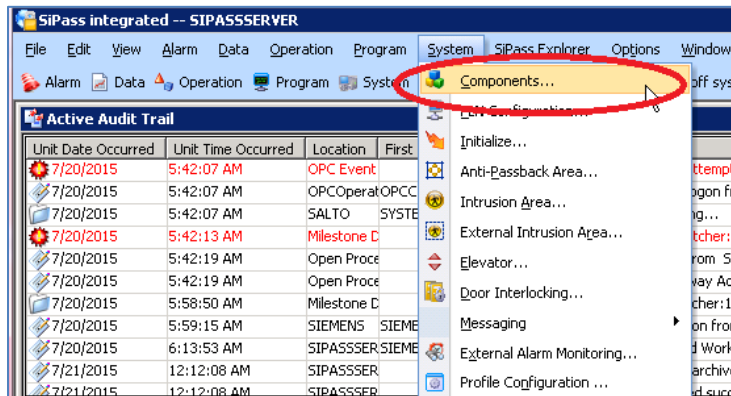


4 Configuration

Once the interface is installed and the Camera Cache is running the configuration can be done with SiPass Integrated.

4.1 Configure VMS

a) Open SiPass Integrated and go to System → Components

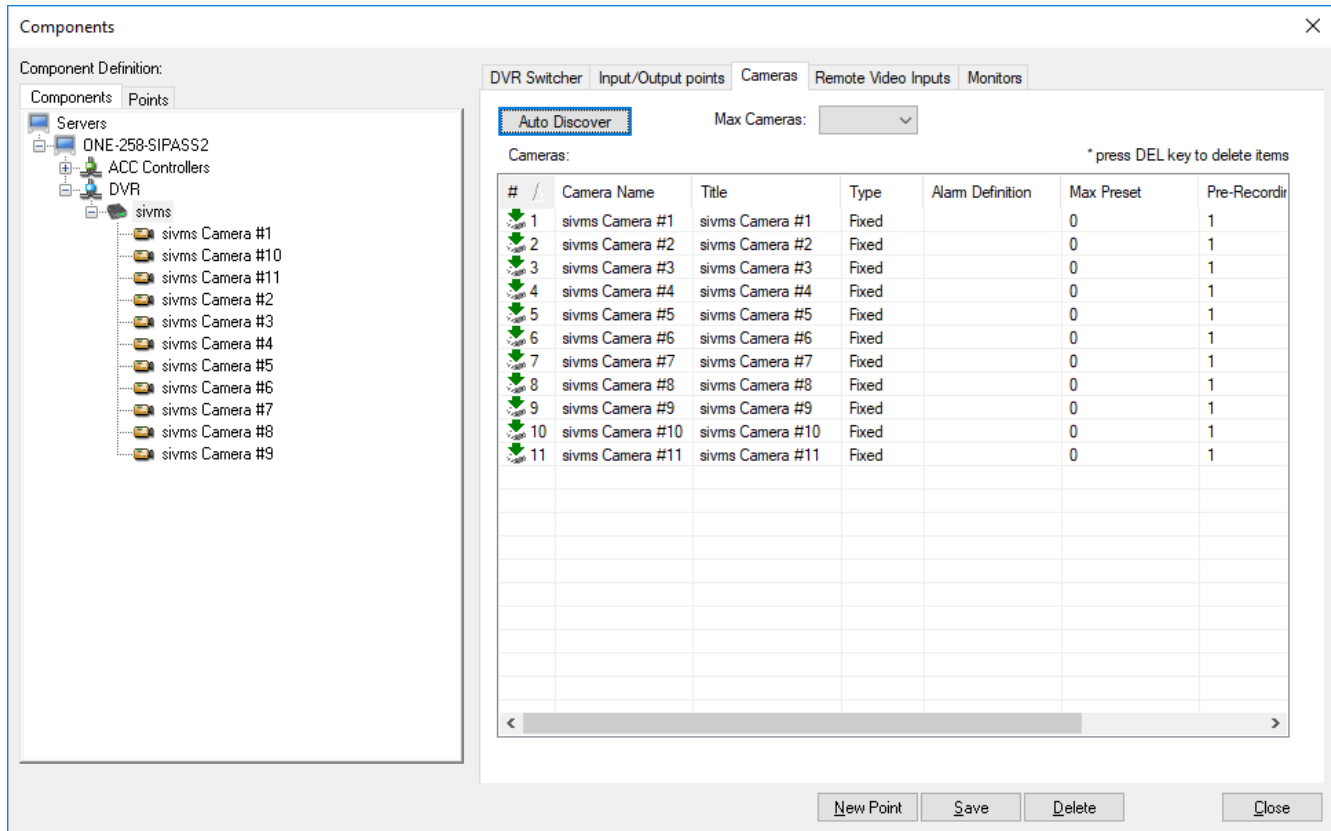


b) Create new DVR Component

Name	Give the new DVR Component a name
Type	Select Generic (DVR-API)
DVR Server	Select Milestone or Siveillance VMS
DVR IP	Insert IP Address of VMS Server (Milestone Server/ Siveillance VMS Server)
User Name	Credentials of Basic user within the VMS system
Password	Password for the above user
Alarm Class	Unused
Description	Unused

4.2 AutoDiscover Cameras from Siveillance VMS

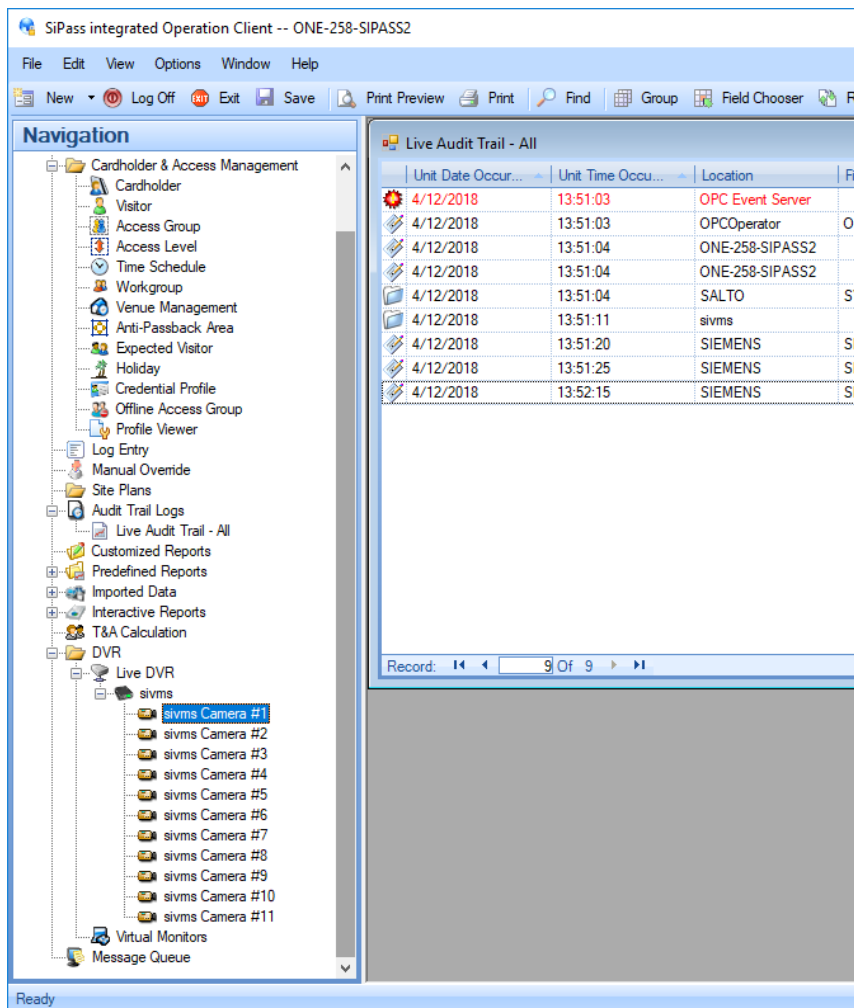
It is possible to AutoDiscover all cameras from Milestone/ Siveillance VMS into SiPass Integrated. Go to **Remote Video Inputs** Tab in the Component Box and click on the **AutoDiscover** button.



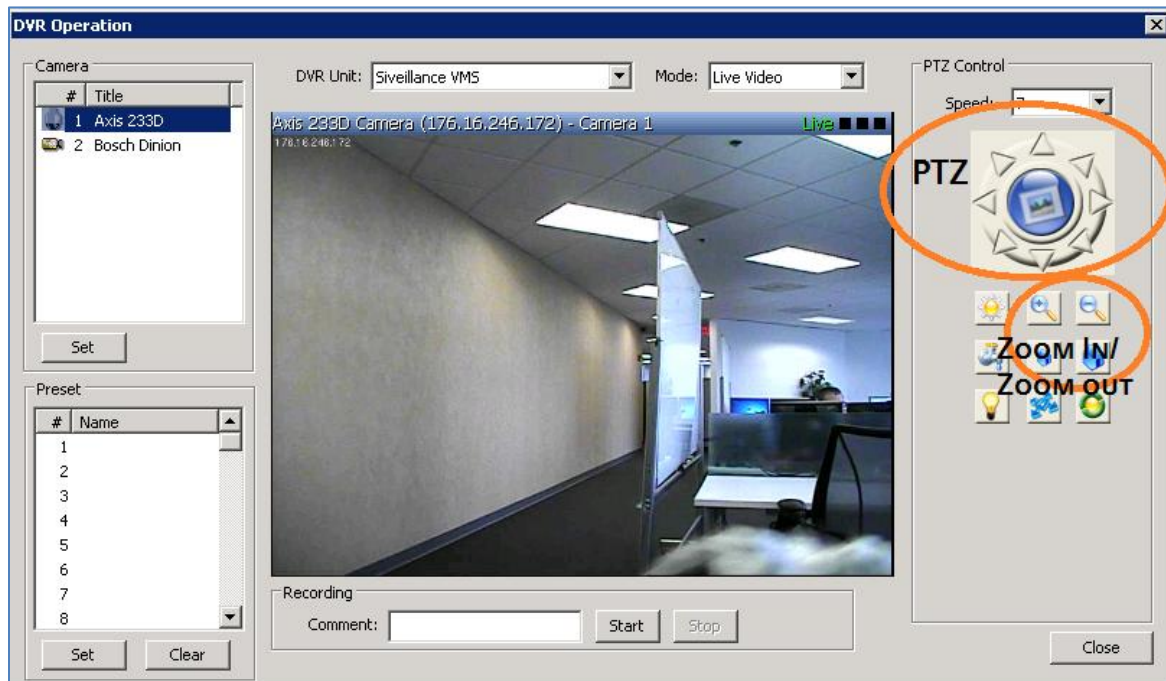
Since the IP Address and the Port of the particular camera is not relevant within SiPass Integrated because they are managed in the VMS, the names of the cameras are inserted into the IP Address field. The Port field is used for the unique SiPass Camera Number which is matched to a unique Milestone/ Siveillance VMS identifier. Remember the name and the unique identifier to create new Cameras within SiPass Integrated. AutoDiscover will not automatically create the new Cameras, they have to be added manually.

4.3 Play Live Video

Go to **Live DVR** list item in the left pane of SiPass integrated Operation Client

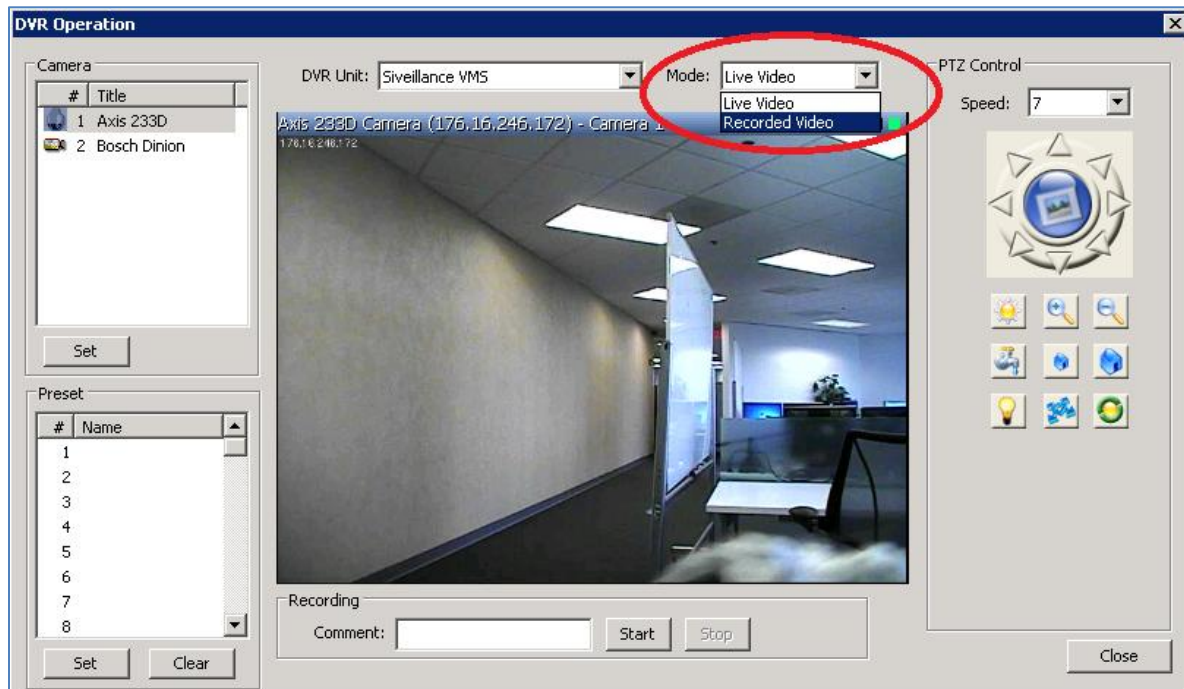


Select Camera to view live



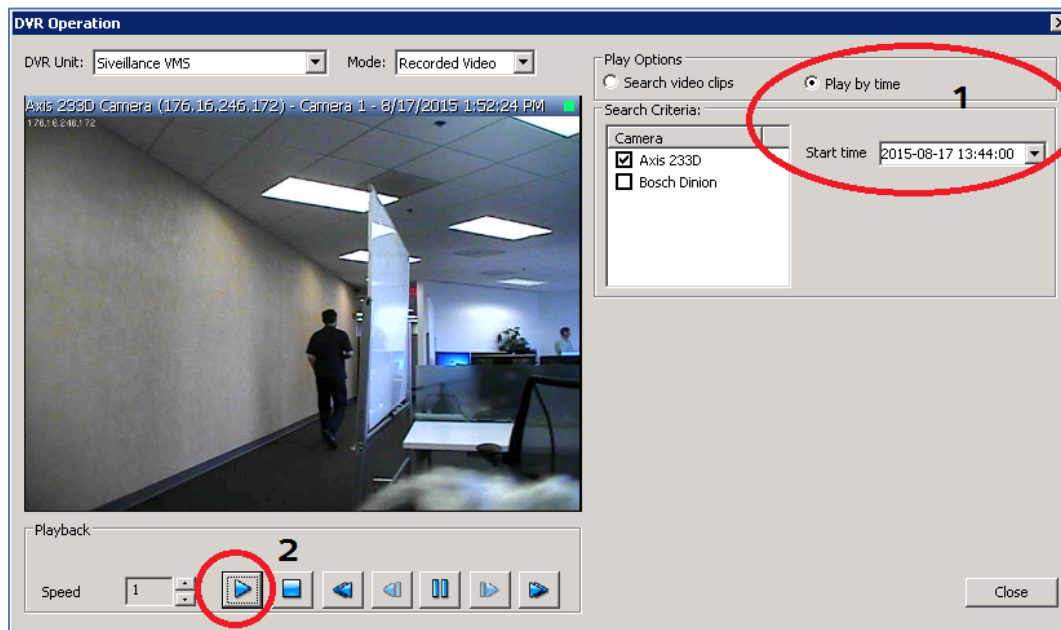
4.4 Play Recorded Video

To play recorded video the mode has to be changed to *Recorded Video*.



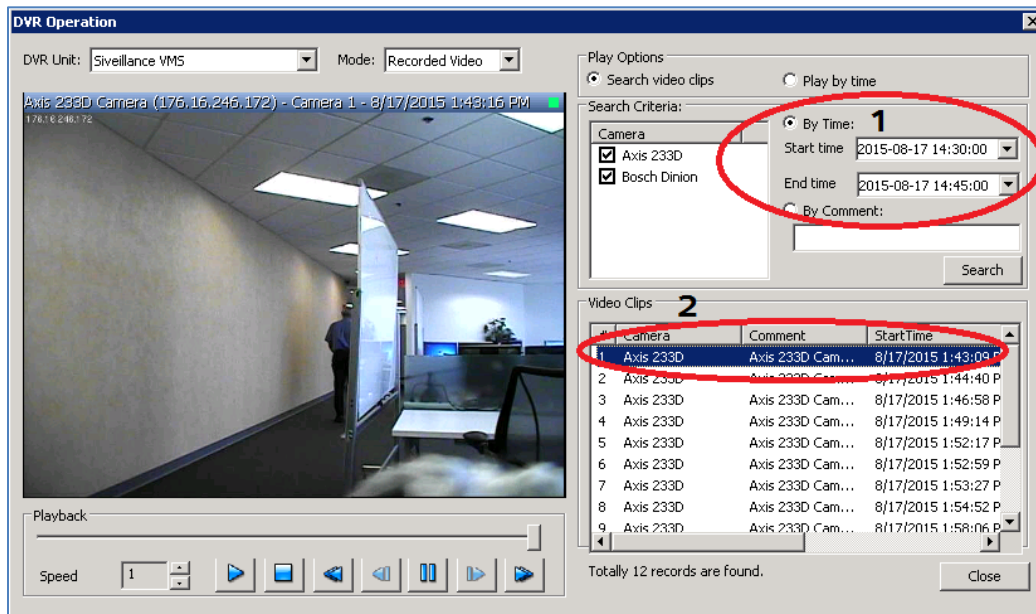
4.4.1 Play by time

Play recorded video by a certain time. Start the video by providing a time (1) and pressing the start button (2).

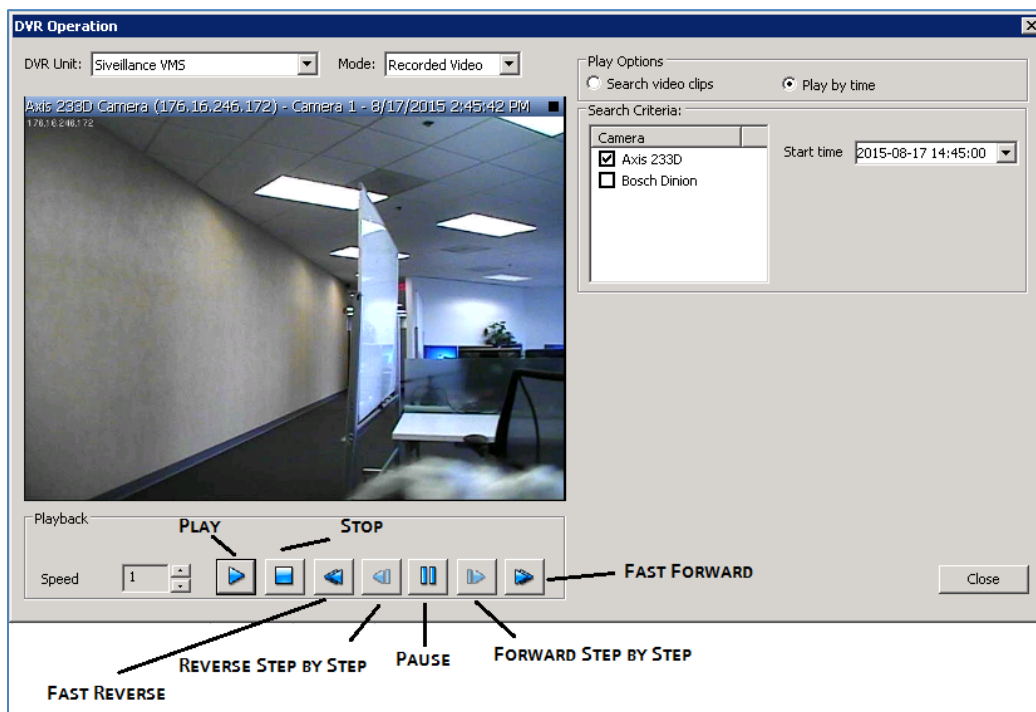


4.4.2 Search video clips

Search video sequences by time. The start and end time for the search of video sequences have to be specified first (1). When video clips/ sequences are found they can be started by double clicking them (2).



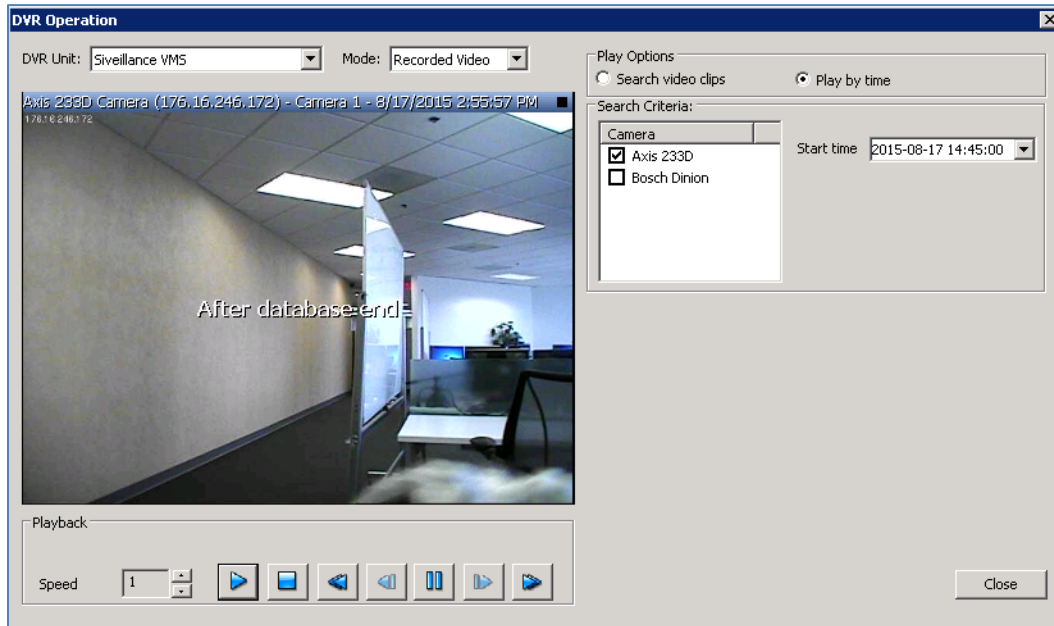
4.4.3 Controls



Forward/ Reverse Step by Step is available when recording is paused.

4.4.4 Information about recorded video

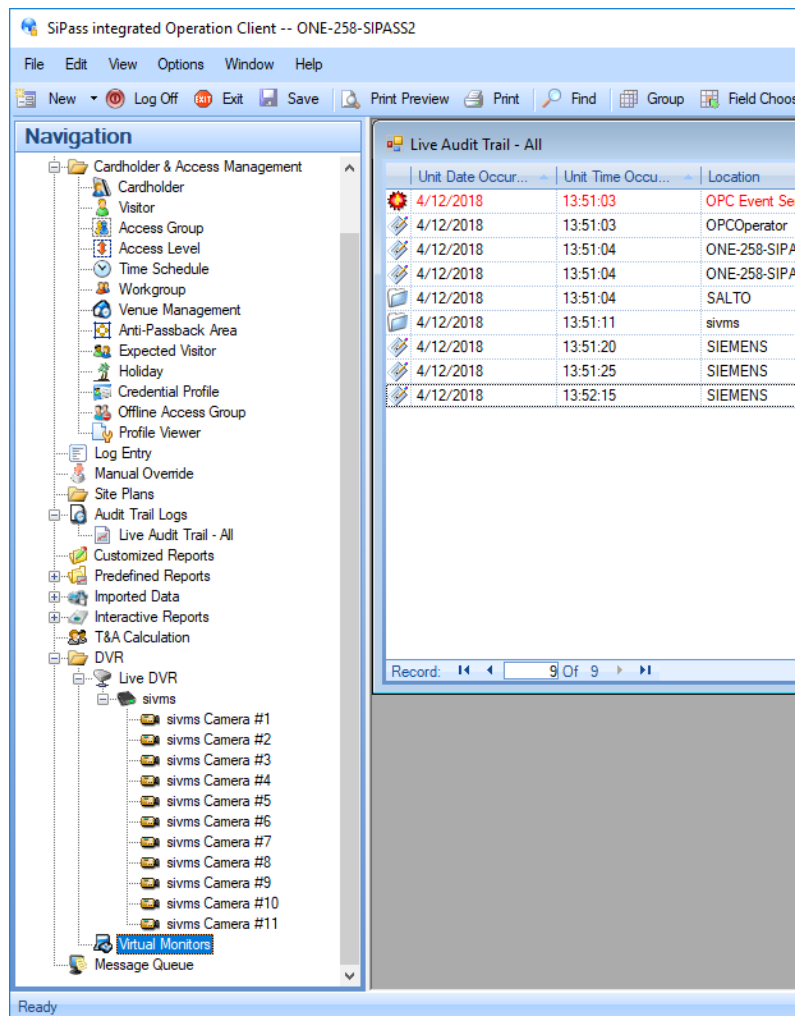
Recorded video is only available in SiPass if Milestone or Siveillance VMS has recorded video. This can be due to motion detection or other settings. In case there is no recorded video available from the VMS for a given time it will be shown in SiPass.



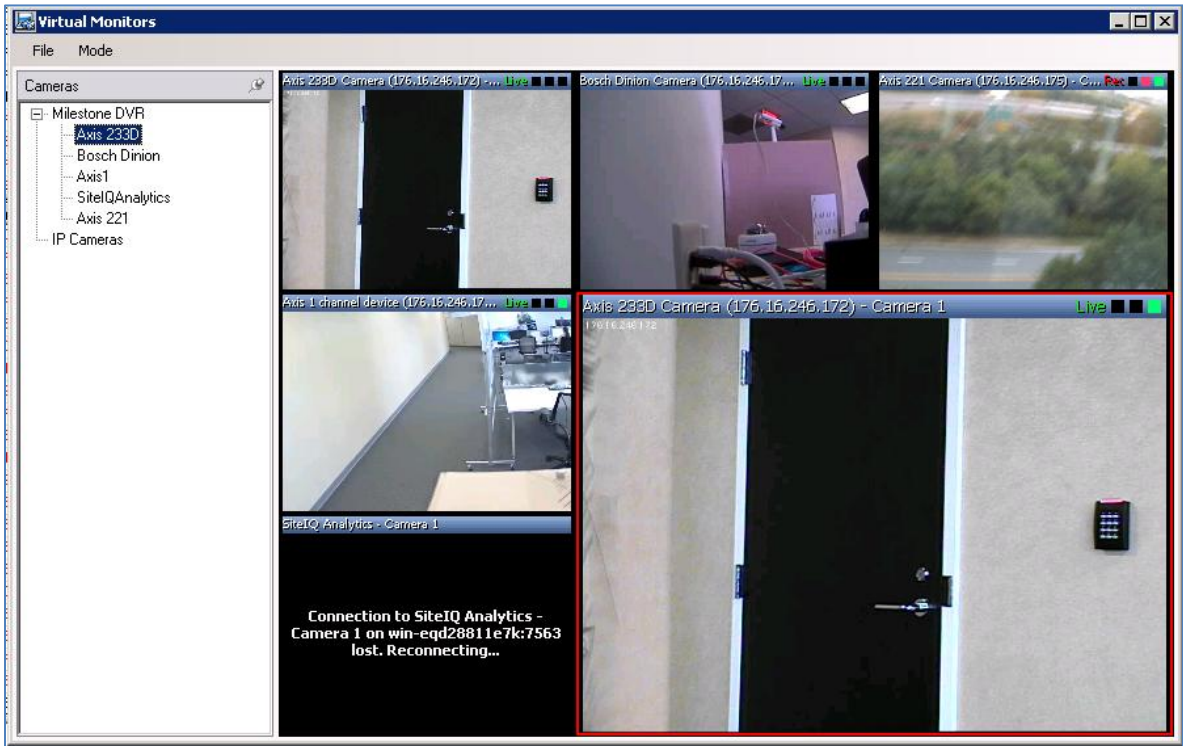
4.5 Virtual Monitors

There is the possibility to arrange several cameras for live play in the Virtual Monitors view.

Go to **Virtual Monitors** list item in the left pane of SiPass integrated Operation Client






Drag and drop cameras in the view for live video.



4.6 Motion Detection

When motion detection is enabled on a camera within Milestone/ Siveillance VMS then these events are forwarded to SiPass and shown in the audit trail.

Unit	Date Occurred	Unit Time Occurred	Location	First Name	Last Name	Message
	8/5/2015	1:55:34 PM	Sensor at Unit#1(DVR), point#1			Motion detected at Unit#1 Camera#1
	8/5/2015	1:57:55 PM	Sensor at Unit#1(DVR), point#1			Motion detected at Unit#1 Camera#1
	8/5/2015	1:58:51 PM	Sensor at Unit#1(DVR), point#1			Motion detected at Unit#1 Camera#1

Issued by
Siemens Switzerland Ltd
Building Technologies Division
International Headquarters
Theilerstrasse 1a
CH-6300 Zug
+41 58 724 2424
www.siemens.com/buildingtechnologies

© Siemens Switzerland Ltd, 2018
Technical specifications and availability subject to change without notice.